



May 13, 2024

USED & STOCK EQUIPMENT

Biglerville, PA • 800-345-3546 | Bellevue, OH/Peru, IN • 800-848-8460 | Sikeston, MO • 573-475-9496

SPRAYERS



\$59,900

2012 AGCO RoGator RG1100, 5035 hours, AGCO Power T4 8.4L 370 hp diesel engine, 1100 gal. SS tank, 100 ft booms with SS boom lines, 10 in. nozzle spacing, 5-way nozzles body, 7-section shutoff valve, Raven Viper Pro, AutoSteer, AccuBoom, A/C, AM/FM radio, air ride seat, 380/90R46 tires (30% remains).

SN: AGCA1100PCNSL1037 (OH) **U1545**



\$100,000

2013 Case IH Patriot 3330, 4025 hrs., Fiat 6.7L 285 hp diesel engine, hydrostatic trans., 1000 gal. SS tank, 90 ft. booms with 20 in. nozzle spacing, single body nozzles, SS chemical eductor, Trimble FMX2000 controller, AutoSteer, Auto shut-offs, AIM Command nozzle control, A/C, AM/FM radio, air ride seat, fenders, 380/90R46 Firestone tires (70% remains).

SN: YDT036007 (Thompsontown, PA) **Brokered**



\$70,000

2008 Hagie DTS10, 2850 hours, Cummins QSL6.7L 300 hp engine, 4WD, hydrostatic trans., 1000-gallon poly tank, 90 ft booms, 15 in. nozzle spacing, single body nozzles, poly boom lines, Ag Leader Integra, AutoSwath, AM/FM, heating and A/C, air ride seat, fenders, 320/85R34 Goodyear tires (70% remains). Hoses, nozzle bodies, and product pump replaced.

SN: U141080019 (Thompsontown, PA) **Brokered**



\$15,000

1996 Stahly GMC TopKick, 8205 hours, 73,454 miles, GMC chassis, CAT 3116 diesel engine, automatic trans., 1450 gal. SS tank, 60 ft booms with poly boom lines, 15 in. nozzle spacing, 5-section shutoff valve, single body nozzles, Raven SCS 460 controller, SS chemical eductor, AM/FM, A/C, air ride seat, fenders, 320/85R34 Michelin Agribib tires.

SN: 1GDP7H1J7TJ513000 (Lowville, NY) **Brokered**



\$49,500

2004 International DT 7400, 3038 hrs., MaxxForce 300 hp diesel engine, Eaton Fuller 10-speed trans., Miller 1200 gal. SS tank, 70 ft booms with SS boom lines, 30 in. nozzle spacing, 7-section shutoff valve, single body nozzles, Ag Leader 1200 controller, SS chemical eductor, foam marker, A/C, AM/FM radio, air ride seat, fenders, includes front 650/55/R26.5 Alliance (75% remains) and rear 105/50/R32 Trelleborg tires (90% remains). Product pump replaced in 2023, great condition!

SN: 1HTWDADR44J018677 (Thompsontown, PA) **Brokered**



\$168,500

2017 GVM F550 Hydra Spray, 50 hrs, 900 miles, XL Super Duty, 4x4 6.7L Power Stroke factory diesel engine, 6-speed automatic trans., 545-gallon Midstate SS tank, 60 ft booms with rubber hose and shock boom suspension, 20 in. on center nozzle spacing, 5-section shutoff valve, triple body nozzles, Raven Viper 4, Phoenix 300, Raven AccuBoom, , undercoating, heat, A/C, AM/FM radio, SS fenders, 41 in. 177 11R22.5 12 ply tires (100% remains). Perfect condition, practically new!

SN: SR-17550G1074 (Salisbury, MD) **Brokered**



\$60,000

2011 GVM 9275 Prowler, 6766.9 hours, Cummins QSB6.7L 275 hp diesel engine, Funk 10-speed powershift trans., 1450 gal. SS tank, 70/90 ft booms with SS boom lines, 15 in. nozzle spacing, 5-section shutoff valve, triple body nozzles, Raven Viper 4+, parallel swatching, 3 sensor AutoBoom, AccuBoom, A/C, AM/FM radio, air ride seat, 380/90R46 Trelleborg tires (30% remains).

SN: RC-119909T1079 (PA) **U1583**



\$80,000

2014 GVM 9275 Prowler, 6649 hrs., Cummins QSB6.7L 275 hp diesel engine, Funk 10-speed powershift trans., 1450 gal. SS tank, 70/90 ft booms with SS boom lines, 15 in. nozzle spacing, 5-section shutoff valve, triple body nozzles, Raven Viper 4+, parallel swatching, Smart-Trax AutoSteer, AutoBoom, AccuBoom, Raven chemical injection, A/C, AM/FM radio, air ride seat, 380/90R46 Trelleborg tires (30% remains).

SN: RC-149909T1121 (PA) **U1584**



\$250,000

2017 GVM E330NT Prowler, 3204 hrs., Cummins QSL8.9, 330 hp diesel engine, Funk DF250 11-speed powershift trans., 99 in. axles, 1800-gallon SS tank, 200-gallon fresh-water tank, 120 ft booms with SS boom lines, 20 in. nozzle spacing, 5-way body nozzles, 9-section shutoff, Raven Viper 4, AutoBoom, Raven Phoenix 600S, Raven chemical injection, combo ready, 380/90R46 4.5 in. offset Trelleborg tires (60% remains).

SN: CS-17330NT1004 (OH) **U1575**



\$2,500

2012 New Leader 5 ft. Multiplier Insert, 5 ft multi-product insert, fits in New Leader spreader, 304 SS, 143 cu. ft capacity. Insert is in good condition.

SN: 125102 (PA) **U1534A**



\$18,500

2015 New Leader L4000G4, painted 409 SS with 304 SS cross members and mounts, 13 ft x 102 in. wide, 330 ft³ capacity, 30 in. BOC, bin level sensor, multiplier ready, RiceLake scales, Raven control nodes, all electrical and hydraulic components included, fenders.

SN: 360071 (PA) **U1572A**



2015 GVM 8.0T Double Duty FR Pull Spreader, 409 SS GVM Double Duty 8.0-ton 10 ft. spreader body, fusion ready, Raven IObus compatible with any VT terminal, 10 ft x 102 in. wide, 250 ft³ capacity, Cable-Lok roll tarp, 120 in. track frame assembly, (2) 380/95R46 Trelleborg tires (70% remains), includes Scale-Tec (4) load cell system with monitor.

SN: PS-1580TF1003 (PA) **U1561**



2011 GVM E350 Prowler, 2192 hrs., mechanically friendly, Cummins 8.9L 350 hp diesel engine, automatic Funk DF250 trans., 11-ton 304 SS GVM Double Duty Fusion Ready body with 5 ft. Fusion insert, Raven Viper Pro, AutoSteer, RGL 600 lightbar, AM/FM, A/C, air ride seat, 380/105R50 row crops not pictured.

SN: CS-11114X11013 (PA) **U1590**



2012 GVM E275 Prowler, 2569 hours, Cummins QSB6.7 275 hp diesel engine, auto. ZF WG210 powershift trans., 120 in. axles, 304 SS New Leader L3220G4 12 ft spreader, Raven Viper Pro, Smartraxx, AutoSteer, 600S antenna, A/C, AM/FM radio, air ride seat, fenders, roll tarp, 380/90R46 Firestone row crop tires (35% remains).

SN: CS-12275IX1001 (PA) **U1595**



2012 GVM E275 Prowler, 3685 hours, Cummins QSB6.7 275 hp diesel engine, auto. ZF WG210 powershift trans. reman 07/2023, 120 in. axles, painted 409 SS New Leader L3220G4 9T spreader with insert, Viper Pro, parallel swathing, Raven Viper Pro, Novatel receiver, RGL 600 Light Bar, A/C, AM/FM radio, air ride seat, front fenders, 380/90R46 Goodyear row crop tires (40% remains), includes set of 680/55R42 floater tires.

SN: CS-12275IX1005 (OH) **U1559**



2013 GVM E325 Prowler, 3850 hours, Cummins QSL 8.9 hp turbo diesel engine, ZF 6-speed trans., 304 SS New Leader spreader, Raven Viper Pro, A/C, AM/FM radio, air ride seat, front 650/65R32 rear 800/65R32 BKT tires (90% remains).

SN: CS-13325XI1015 (PA)



2015 GVM E325 Prowler, 3992 hrs., Cummins QSL 8.9L 325 hp diesel engine, 1010 ft-lb torque, auto. ZF WG 210 6-speed powershift trans, 99 in. axles, variable coil spring suspension, combo ready, painted 409 SS New Leader L4000G4 spreader body, bin level sensor, rear camera, Raven Viper Pro, reverse pitch fan, A/C, AM/FM radio, air ride seat, Firestone 380/90R46 tires. Set of 650/70R32 floater tires included.

SN: CS-15325NT1004 (PA) **U1572**



\$115,000

2015 GVM E325 Prowler, 3199 hrs., Cummins QSL 8.9L 325 hp diesel engine, 1010 ft-lb torque, auto. ZF WG 210 6-speed powershift trans, 114 in. axles, variable coil spring suspension, combo ready, painted 409 SS GVM 11.0T Double Duty spreader body, rear camera, Raven Viper Pro, SmarTrax, AutoSteer, reverse pitch fan, A/C, AM/FM radio, air ride seat, Trelleborg 380/90R46 tires.

SN: CS-15325X11034 (PA) **U1577**



\$135,000

2017 GVM E330AA Prowler, 5214 hrs., Cummins Tier 3 QSL 9L 330 hp turbo diesel engine, Funk DF250 11-speed powershift trans., 93-120 in wheel spacing, Dromos adjustable axles, 409 SS New Leader L4000G4 10-ton spreader, Raven Viper Pro, SmarTrax, A/C, AM/FM radio, air ride seat, beacon lights, CleanFix fan, Firestone VF380/90R46 tires (40% remains).

SN: CS-17330AA1008 (PA) **U1580**



\$215,000

2020 GVM T380 Prowler, 2017 hrs., Cummins QSL9 380 hp turbo diesel engine, Funk DF250 4x4 powershift 11-speed auto. trans., 120-164 in. wheel spacing, Dromos adjustable axles rated @ 34,000 lb., 4WS, sprayer combo joystick, reverse pitch fan, 304SS GVM 11.0T Double Duty TR4 spreader body with reverse rotating spinners, 4-section shutoff, bulkhead window, Raven Viper 4 with RS-1 ISO steering receiver, A/C, AM/FM/BT radio, air ride seat, window tint, electric roll tarp, front fenders, 380/105R54, 900/50R46 floaters. EPG warranty options available.

SN: CS-20380XAA1043 (OH) **U1587**



\$255,000

2020 GVM T380 Prowler, 1961 hrs., Cummins QSL9 380 hp turbo diesel engine, Funk DF250 4x4 powershift 11-speed auto. trans., Dromos adjustable axles rated @ 34,000 lb., 4WS, sprayer combo joystick, reverse pitch fan, 304SS GVM 11.0T Double Duty TR4 spreader body with reverse rotating spinners, 4-section shutoff, bulkhead window, Raven Viper 4 with RS-1 ISO steering receiver, A/C, AM/FM/BT radio, air ride seat, window tint, electric roll tarp, front fenders, 480/80R50 Alliance tires. EPG warranty options available.

SN: CS-20380XAA1044 (MO) **U1528**



\$240,000

2020 GVM T380 Prowler, 1305 hrs., Cummins QSL9 380 hp turbo diesel engine, Funk DF250 4x4 powershift 11-speed auto. trans., Dromos axles rated @ 34,000 lb., 4WS, 304SS GVM 11.0T Double Duty SR1 spreader body with reverse rotating spinners, 1-section shutoff, bulkhead window, bin level sensor, 124 in. fenders, Raven Viper 4 with RS-1 ISO steering receiver, A/C, AM/FM/BT radio, air ride seat, roll tarp, front fenders, 380/90R46 row crop tires (80% remains). Includes remainder of 3-yr/3000 hrs. EPG Premier Warranty.

SN: CS-203804WT1047 (OH) **U1548**



\$265,000

2021 GVM T380 Prowler, 1419 hrs., Cummins QSL9 380 hp turbo diesel engine, Funk DF250 4x4 powershift 11-speed auto. trans., Dromos wide track adjustable axles, 173 in. wheelbase, 4WS, reverse pitch fan, 304SS GVM 11.0T Double Duty SS1 spreader body with heavy bulk standard rotating spinners, bulkhead window, Raven Viper 4 with RS-1 ISO steering receiver, Slingshot unlock, Raven RGL 600 Light Bar, A/C, AM/FM/BT radio, air ride seat, window tint, electric roll tarp, rear camera and 2 extra, fenders, 480/95R50 Alliance row crop tires. EPG warranty options available.

SN: CS-21380XAA1060 (MO) **U1589**



\$285,000

2022 GVM T380 Prowler, 1007 hrs., Cummins QSL9 380 hp turbo diesel engine, Dana HVT-R2 trans., Dromos axles rated @ 32,000 lb., 4WS, 304SS GVM 11.0T Double Duty SR1 spreader body with reverse rotating spinners, 1-section shutoff, bulkhead window, 124 in. float fenders, Raven Viper 4 with RS-1 ISO steering receiver, A/C, AM/FM/BT radio, air ride seat, roll tarp, front fenders, window tint, 380/90R46 row crop tires (50% remains). Includes remainder of 3-yr/3000 hrs. EPG Premier Warranty.

SN: CS-223804WT1071 (MO) **U1591**



\$475,000

2022 GVM T380 Prowler, 500 hrs., Cummins QSL9 380 hp turbo diesel engine, Dana HVT-R2 trans., Meritor axles, 2WS, GVM Double Duty Air, 3-compartment 72 ft 304SS booms, painted 409 SS, 13'x78 in. wide, 350 cu ft, LH and RH 16 in. SS conveyor chains, SS hopper screens, 72 ft 304SS booms, 27 in. nozzle spacings, break away, 22 in. fan, electric roll tarp with Raven RCM ISO control, lights and reflector, hydraulic tilt and fold, electric-over-hydraulic controls, rear camera, dual 90cc pumps, 380/90R46 row crop tires (80% remains). Includes remainder of 5-yr/3000 hrs. EPG Premier Warranty.

SN: CS-223802WT1082 (PA) **U1582**



\$315,000

2023 GVM T380 Prowler, 635 hrs., Cummins QSL9 380 hp turbo diesel engine, Dana HVT-R2 trans., Dromos axles rated @ 32,000 lb., 4WS, 304SS GVM 11.0T Double Duty TR2 spreader body with reverse rotating spinners, 2-section shutoff, bulkhead window, 124 in. float fenders, Raven Viper 4 with RS-1 ISO steering receiver, A/C, AM/FM/BT radio, air ride seat, roll tarp, front fenders, window tint, AgCam camera, 380/90R46 row crop tires (75% remains). Includes remainder of 3-yr/3000 hrs. EPG Premier Warranty.

SN: CS-233804WT1088 (MO) **U1594**



\$315,000

2023 GVM T380 Prowler, 577 hrs., Cummins QSL9 380 hp turbo diesel engine, Dana HVT-R2 trans., Dromos axles rated @ 32,000 lb., 4WS, 304SS GVM 11.0T Double Duty TR2 spreader body with reverse rotating spinners, 2-section shutoff, bulkhead window, 124 in. float fenders, Raven Viper 4 with RS-1 ISO steering receiver, A/C, AM/FM/BT radio, air ride seat, roll tarp, front fenders, window tint, AgCam camera, 380/90R46 row crop tires (75% remains). Includes remainder of 3-yr/3000 hrs. EPG Premier Warranty.

SN: CS-233804WT1085 (MO) **U1593**



\$99,500

2013 John Deere 4940, 3386.4 hrs., John Deere 9.0L diesel engine, hydrostatic trans., painted 409 SS New Leader L3020G4 spreader, JD Greenstar 2630 controller, AutoSteer, A/C, heat, AM/FM radio, air ride seat, fenders, tires (60% remains).

SN: 1N04940XAD0028389 (PA) **U1585**



\$39,900

2011 Ag Chem Rogator 1396, 4905 hrs., Caterpillar 365 hp diesel engine, hydrostatic trans., painted 409SS AGCO Airmaxx spreader 200 ft3, 60 ft booms, A/C, AM/FM radio, 380/90R46 tires (30% remains), includes a set of (2) BKT (75% remains) and (2) Firestone (50% remains) 650/65R38 floater tires.

SN: AGCA1396KNWMO1124 (MO) **U1578**



\$43,500

2011 Ag Chem Rogator 1396, 4300 hrs., Caterpillar 365 hp diesel engine, hydrostatic trans., painted 409SS New Leader L3020G4 spreader, 4WS, adjustable axles, Michelin Spray Bibs, Ag Leader InCommand 1200, new BOC, A/C, AM/FM radio, 380/90R46 tires (30% remains), includes a set of 650/65R38 (75% remains) floater tires.

SN: AGCA1396KNWMOXXX (OH) **U1602**



\$65,000

2014 RBR Vector 350, 3831 hrs., Cummins QSB 8.3L 350 hp diesel engine, Allison 4-speed auto. trans., AxleTech planetary axles, 4WD, 2017 Case Flex-Air 810 air body 2-bin spreader, 70 ft booms, Raven Viper Pro, AccuBoom, AutoSteer, light bar, A/C, air ride seat, tinted cab, electric roll tarp, front and rear fenders, 380/90R46 Michelin tires (70% remains). Hydraulic hoses replaced.

SN: FA1406123 (Thompsontown, PA) **Brokered**



\$49,900

2012 AGCO Rogator RG1100, 5059 hours, AGCO Power T4 8.4L hydrostatic 330 hp diesel engine, 304 SS New Leader L3220G4 9.0T spreader body, Ag Leader InCommand 1200, A/C, AM/FM radio, air ride seat, 380/90R46 tires (70% remains), includes a set of 650/65R38 floater tires (90% remains).

SN: AGCA1100CCH001219 (OH) **U1567**



\$4,500

AGCO Willmar S800, 50 ft dual spinner spreader with standard equipment, 409 SS spreader box with 8-ton capacity, hydraulic rope control, 77 in track width with 4-wheel brakes, (4) 19L-16.1SL tires.

SN: 12015399 (PA) **U1596**



\$7,500

AGCO Willmar S800, 50 ft dual spinner spreader with standard equipment, 409 SS spreader box with 8-ton capacity, hydraulic rope control, 77 in track width with 4-wheel brakes, (4) 19L-16.1SL tires.

SN: 12015397 (PA) **U1597**



\$8,500

AGCO Willmar S800, 50 ft dual spinner spreader with standard equipment, 409 SS spreader box with 8-ton capacity, hydraulic rope control, 77 in track width with 4-wheel brakes, (4) 19L-16.1SL tires.

SN: 12015398 (MO) **U1598**

SPREADERS



\$6,500

AGCO Willmar S800, 50 ft dual spinner spreader with standard equipment, 409 SS spreader box with 8-ton capacity, hydraulic rope control, 77 in track width with 4-wheel brakes, (4) 19L-16.1SL tires.

SN: 12013980 (MO) **U1600**



\$6,500

AGCO Willmar S800, 50 ft dual spinner spreader with standard equipment, 409 SS spreader box with 8-ton capacity, hydraulic rope control, 77 in track width with 4-wheel brakes, (4) 19L-16.1SL tires.

SN: 12015550 (MO) **U1601**

TRACTORS



\$21,900

2021 John Deere 5075E, 906 hours, 75 hp diesel engine, TSS transmission, 2WD, power steering, 1-point hydraulic hook-up, 540 PTO, ROPS, front 7.50-16SL rear 16.9-28 tires (75% remains). Well maintained and field ready!

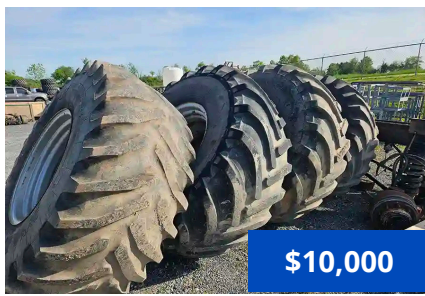
SN: 1PY5075ETJJ104359 (PA) **U1573**

MISC.



\$7,000

2019 Cummins QSL9 Diesel Engine, Used Cummins engine, 6 cylinder, 9L, 350 hp at 2100 rpm. (PA) **U1558**



\$10,000

Set of 4 Goodyear 800/65R32 floater tires (50% remains). (PA) **U1590A**



\$9,500

2013 Goodyear 480/80R50 tires for a John Deere 4940 self-propelled wheels and tires (40% remains). (PA) **U1585A**



\$29,500

Set of 4 Trelleborg 900/60R42 floater tires (90% remains). (PA) **U1582A**



\$25,000

Set of 4 Goodyear 900/50R46 floater tires (50% remains). Three sets available. (PA) **U1591A, U1593A, U1594A**



\$3,500

Set of 2 Firestone 800/65R32 floater tires on 10-bolt rims, will fit any GVM make and model Prowler. (PA) **U1588**



CALL

2023 GVM T380 Prowler, Cummins QSL9 380 hp turbo diesel engine, HVT R2 trans. with joystick control, Meritor axles, 2WS, 304SS GVM 11.0T Double Duty SR1 spreader body with reverse rotating spinners, 1-section shutoff, bulkhead window, 124 in. fenders, Raven Viper 4 with RS-1 ISO steering receiver, A/C, AM/FM/BT radio, air ride seat, roll tarp, front fenders, 380/90R46 Trelleborg row crop tires. Includes 3-yr/3000 hrs. EPG Premier Warranty.

SN: CS-233802WT1084 (OH)



\$24,000

2022 Newton Crouch NC5000, 5 ton, 163 cu. ft. capacity, designed for fertilizer spreading, 50 ft spread pattern, 304 SS hull, dishes, inverted vee, blades and conveyor, trailer painted blue powder coat, trailer frame reinforced of 2 x 6 inch tube, 7 in. conveyor chain, dual 19 in. dishes with 6 blades, universal joint on spinner drive shaft, ground driven conveyor, 6 bolt hubs, 7000 lb drop leg tongue jack, braided nylon rope pull, 540 PTO drive with twin spinners, 6 leaf and double eye springs, roll tarp fitted with stainless tarp bow, 11L x 15 – 8 ply tires.

SN: 11-22-13535 & 11-22-13533 (PA)



\$32,500

2022 Newton Crouch NC6000N, 6 ton, 204 cu. ft. capacity, designed for fertilizer spreading, 50 ft spread pattern, 304 SS hull, dishes, inverted vee, blades and conveyor, trailer painted blue powder coat, trailer frame reinforced of 2 x 6 inch tube, 7 in. conveyor chain, dual 19 in. dishes with 6 blades, universal joint on spinner drive shaft, ground driven conveyor, 8 bolt hubs, 7000 lb drop leg tongue jack, braided nylon rope pull, 540 PTO drive with twin spinners, 5 leaf slipper springs, roll tarp fitted with stainless tarp bow, 16.5L x 16.1 – 10 ply tires. SN: 11-22-13544 (OH)