



January 16, 2023

USED & STOCK EQUIPMENT



Biglerville, PA
800-345-3546

Bellevue, OH/Peru, IN
800-848-8460

Sikeston, MO
573-475-9496

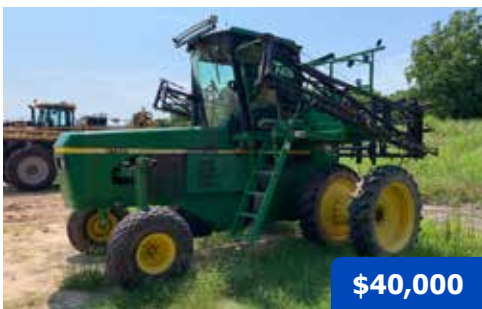
SPRAYERS



\$35,000

2006 AGCO Spra Coupe 4450, 1106 hrs., Perkins 110 hp diesel engine, manual Borg Warner 5-speed trans., 400-gallon poly tank, 80 ft booms with poly boom lines, 20 in. nozzle spacing, 5 section shutoff valve, single body nozzles, Raven SCS 460, EZ Glide 250, foam marker, A/C, AM/FM radio, LED lights, front 9-24 tire, rear 12.4-24 tires (50% remains). Great condition.

SN: 4450JP8M101 (OH) **U1529**



\$40,000

2005 John Deere 6700, 3,986 hrs., 4-cyl PowerTech 2240 turbocharged 106 hp diesel engine, hydrostatic trans., 2-forward gears, 420 gal. poly tank, 60 ft booms, 15 in. nozzle spacing, EZ Guide 250, A/C, AM/FM radio, crop shields, fenders, front tires 12.4-38 (45% remains), rear 13.50-16.1SL (50% remains).

SN: N06700X012024 (England, AR) **BROKERED**



\$150,000

2016 GVM Mako 400HC, 681 hrs., Cummins Tier III QSB4.5L 130 hp diesel engine, Allison auto. 2100 RDS trans., 46 in. clearance, double telescoping drive shaft, 400 gal. poly tank, 80 ft booms, 5-section shutoff valve, rotary triple nozzles, 20 in. nozzle spacing, Ag Leader Incommand 1200 with 7500 GPS, Ag Leader SteerCommand, RTK unlocked, Greentronics, air ride seat, A/C and heat, AM/FM/BT radio, toolbox, front and rear fenders, 380/85R24 tires.

SN: MK-16400HC1002 (Bridgeville, DE) **BROKERED**



\$235,000

2017 GVM E330NT Prowler, 2225 hrs., Cummins QSL8.9, 330 hp diesel engine, Funk DF250 11-speed powershift trans., 99 in. axles, 1400-gallon SS tank, 200-gallon freshwater tank, 90 ft booms with SS boom lines, 20/30 in. nozzle spacing, 5-way body nozzles, Raven Viper 4, Raven Phoenix 600S, combo ready, 380/90R46 4.5 in. offset Trelleborg tires (40% remains).

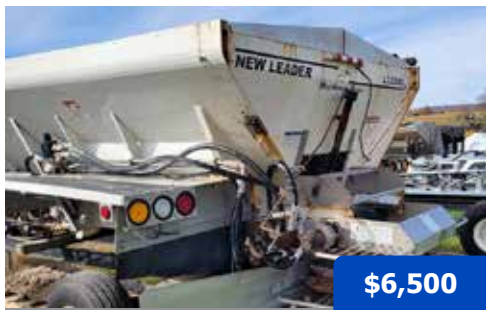
SN: CS-173309T1002 (PA)



\$14,500

2010 Redball 670, 1200 gal. poly tank, 90/60 ft booms, 5-section shutoff valve, rotary triple nozzles, 20 in. nozzle spacing, Raven SCS 460 controller, Ace hydraulic pump, catwalk, 320/90R46 tires (80% remains).

(OH) **U1530**



\$6,500

2013 New Leader L3220G4, painted 409 SS New Leader L3220G4 12 ft. spreader body, 250 cu ft capacity, fenders, 34 in belt over chain, multiplier ready, Raven product control node. No hydraulic tank and cooler.

SN: 134137 (PA) **U1542**



\$6,000

2013 GVM 5 ft. Fusion Insert, 5 ft multi-product insert, fits in GVM Double Duty spreader, 304 SS, 143 cu. ft capacity. Insert is in good condition.

(Houston, MO) **BROKERED**



\$15,000

2017 Double Duty 7 ft. Insert, 7 ft multi-product insert, fits in 13 ft spreader body, 304 SS. All electrical and hydraulic connections included.

SN: 502222 (Charleston, MO) **BROKERED**



CALL

2013 GVM E325 Prowler, 2091 hrs., Cummins QSL 8.9 hp turbo diesel engine, ZF 6-speed trans., 409 SS painted GVM Double Duty 11 ton spreader, Viper Pro, Smartraxx 3D auto steer, A/C, AM/FM radio, air ride seat, 380/90R46 Row crop tires (85% remains). Includes set of 650/75R32 Alliance floater tires.

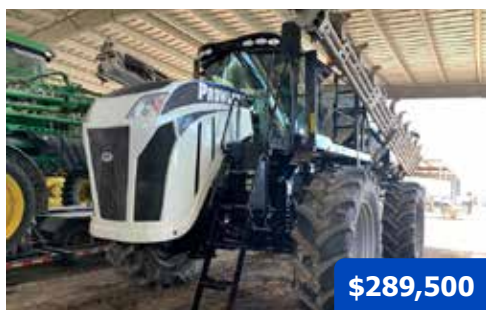
SN: CS-13325XI1012 (Fairfield, VA) **BROKERED**



\$83,500

2017 GVM E330AA Prowler, 4932 hrs., Cummins Tier 3 QSL 9L 330 hp turbo diesel engine, Funk DF250 11-speed powershift trans., AxleTech adjustable axles, 304 SS New Leader L4000G4 10-ton spreader, Raven Viper 4, A/C, AM/FM radio, air ride seat, beacon lights, CleanFix fan, tinted windows, front 800/65R32 Goodyear tires (50% remains) rear 800/65R32 Continental tires (75% remains). Reman transmission July 2022.

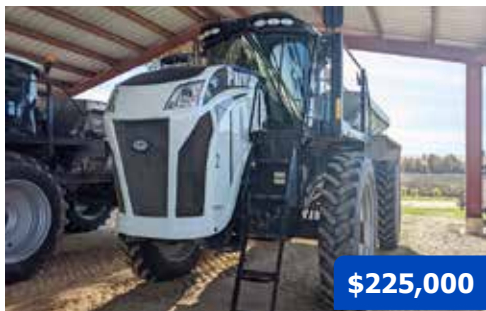
SN: CS-17330AA1008 (PA) **U1519**



\$289,500

2019 GVM T380 Prowler, 1115 hrs., Cummins QSL9 380 hp turbo diesel engine, Funk DF250 4x4 powershift 11-speed auto. trans., 114 in. Dromos axles, 2WS, reverse pitch fan, Raven Viper 4+ field computer with RS-1 ISO steering receiver, painted 409SS GVM Double Duty Air 3-compartment spreader body, 70 ft 304SS booms, 26 in. spacings, rear camera, metering system for micro nutrient bin, A/C, AM/FM/BT radio, air ride seat, electric roll tarp, 650/70R46 Goodyear flotation tires (70% remains). Sub-frame blasted and painted, includes remainder of EPG Premier warranty.

SN: CS-193802WT1010 (MO) **U1532**



\$225,000

2019 GVM T380 Prowler, 1315 hrs., Cummins QSL9 380 hp turbo diesel engine, Funk DF250 4x4 powershift 11-speed auto. trans., 114 in. Dromos axles, 4WS, reverse pitch fan, painted 409SS GVM 11.0T Double Duty Fusion Ready spreader body with reverse rotating spinners, bin level sensor, Raven Viper 4 with RS-1 ISO steering receiver, RGL 600 light bar, A/C, AM/FM/BT radio, air ride seat, window tint, roll tarp, rear fenders, 380/105R54 Alliance row crop tires (50% remains). EPG warranty options available.

SN: CS-193804WT1023 (PA) **U1501**



\$175,000

2019 GVM T380 Prowler, 3200 hrs., Cummins QSL9 380 hp turbo diesel engine, Funk DF250 4x4 powershift 11-speed auto. trans., Dromos adjustable axles rated @ 36,000 lb., 4WS, reverse pitch fan, painted 409SS GVM 11.0T Double Duty Fusion Ready spreader body with reverse rotating spinners, Raven Viper 4 with RS-1 ISO steering receiver, RGL 600 light bar, A/C, AM/FM/BT radio, air ride seat, camera kit, LED work lights, roll tarp, front fenders, 380/75R50 Titan row crop tires (40% remains). EPG warranty options available.

SN: CS-193804AA1024 (MO)



\$279,000

2020 GVM T380 Prowler, 1841 hrs., Cummins QSL9 380 hp turbo diesel engine, Funk DF250 4x4 powershift 11-speed auto. trans., Dromos adjustable axles rated @ 34,000 lb., 4WS, sprayer combo joystick, reverse pitch fan, 304SS GVM 11.0T Double Duty TR4 spreader body wwith reverse rotating spinners, 4-section shutoff, bulkhead window, Raven Viper 4 with RS-1 ISO steering receiver, A/C, AM/FM/BT radio, air ride seat, window tint, electric roll tarp, front fenders, 480/80R50 Alliance tires. EPG warranty options available.

SN: CS-20380XAA1044 (MO) **U1528**



\$295,000

2021 GVM T325 Prowler, 928 hrs., Cummins B6.7L 325 hp turbo diesel engine, Funk DF250 4x4 powershift 11-speed auto. trans., Dromos axles rated @ 34,000 lb., 4WS, 304SS GVM 11.0T Double Duty SR1 spreader body with reverse rotating spinners, 1-section shutoff, bulkhead window, 124 in. fenders, Raven Viper 4+ with RS-1 ISO steering receiver, RGL 600 light bar, A/C, AM/FM/BT radio, air ride seat, window tint, roll tarp, 380/105R50 row crop tires (50% remains). Includes remainder of 3-yr/3000 hrs. EPG Premier Warranty.

SN: CS-213254WT1057 (MO) **U1539**



\$65,000

2012 RBR Vector 300, 4905 hrs., Cummins QSB 8.3 300 hp diesel engine, Allison 6-speed auto. trans., New Leader L400G4 spreader body, Viper Pro, light bar, A/C, air ride seat, front and rear fenders, 480/80R46 floater tires (70% remains).

SN: M1200259 (OH) **U1503**



\$81,250

2012 RBR Vector 300, 3900 hours, Cummins QSB 8.3 300 hp diesel engine, Allison 6-speed auto. trans., New Leader L3020G4 spreader body, Viper Pro, SlingShot, light bar, belly shield, roll tarp, A/C, air ride seat, AM/FM radio, front and rear fenders, 380/90R46 tires (75% remains). New BOC.

SN: M1200203 (OH) **U1536**

COMBO



2015 GVM E325 Prowler, 1818 hours, Cummins QSL 8.9 325 hp turbo diesel engine, ZF 6-speed trans., painted 409 SS New Leader L4000G4 10-ton spreader body, new BOC installed in 2022, 1800-gallon SS tank, 100 ft booms, 20 in. nozzle spacing, 5-way body nozzles, dual fence row nozzles, SS chemical eductor, Raven Viper 4, Phoenix 600s, SmarTrax 3D, Raven UltraGlide G-II AutoBoom, beacon lights, work lights, tinted cab, rear camera kit, large SS cabinet, front and rear fenders, 380/105R50 tires (40% remains) and 900/50R46 Goodyear LSW tires (80% remains) SN: CS-15325XI1037 (PA) **BROKERED**

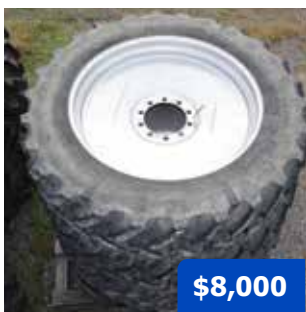
\$225,000

MISC.



Call for Price

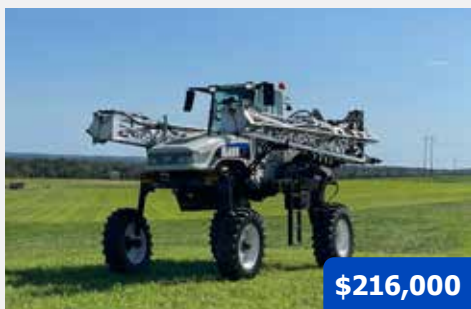
(2) Rims 12x46 in., heavy bead gray, W46-03500P15. **Brand new!** (PA)



\$8,000

(4) Firestone Row Crop Tires and Rims, 380/90R46, white, with 1 in. offset. (PA)

SPRAYERS

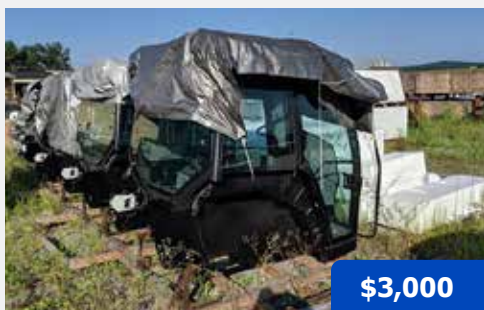


\$216,000

2022 GVM Mako 455, 290 hrs., Cummins Stage V 3.8L 130 hp diesel engine, Allison auto. 2100 RDS trans., 46 in. clearance, double telescoping drive shaft, 425 gal. poly tank, 42/80 ft Pommier booms, 5-section shutoff valve, rotary triple nozzles, 15 in. nozzle spacing, Patchworks, Greentronics, EVO spray safe cab, air ride seat, A/C and heat, AM/FM/BT radio, LED work lights, rotating beacon, 320/85R24 front 380/85R24 rear tires.

SN: MK-224551001 (PA)

MISC.



\$3,000

Crenlo Genesis Cab, Brand new cabs made for 1996-2014 GVM Prowlers. Will fit all Rowcats, 1149/9909T and 9275 Prowlers. Can also fit New Holland Genesis series tractors with modifications. (PA)

PART NUMBER	DESCRIPTION	QTY	PRICE
W38-13300	Rim 38 x 12 11/16 in. offset (front)	2	\$566
W-619060R	Rim W14 x 16.1	2	\$73
42-01160 (PA)	Assy., Dash Panel Electronic 2004	3	\$1,327
117-0138-050	Auto Boom Kits	2	\$9459.21

STOCK