



September 25, 2023

USED & STOCK EQUIPMENT



Biglerville, PA
800-345-3546

Bellevue, OH/Peru, IN
800-848-8460

Sikeston, MO
573-475-9496

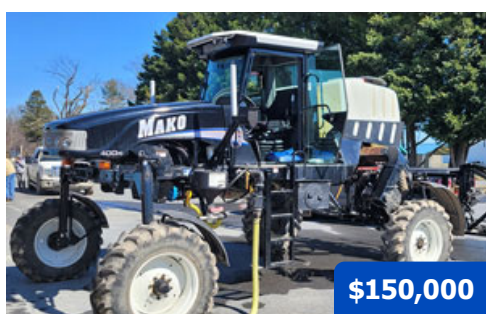
SPRAYERS



\$75,000

2012 AGCO RoGator 1100, 5035 hours, AGCO Power T4 8.4L 370 hp diesel engine, 1100 gal. SS tank, 100 ft booms with SS boom lines, 10 in. nozzle spacing, 5-way nozzles body, 7-section shutoff valve, Raven Viper Pro, AutoSteer, AccuBoom, A/C, AM/FM radio, air ride seat, 380/90R46 tires (30% remains).

SN: AGCA1100PCNSL1037 (PA) **U1545**



\$150,000

2016 GVM Mako 400HC, 681 hrs., Cummins Tier III QSB4.5L 130 hp diesel engine, Allison auto. 2100 RDS trans., 46 in. clearance, double telescoping drive shaft, 400 gal. poly tank, 80 ft booms, 5-section shutoff valve, rotary triple nozzles, 20 in. nozzle spacing, Ag Leader Incommand 1200 with 7500 GPS, Ag Leader SteerCommand, RTK unlocked, Greentronics, air ride seat, A/C and heat, AM/FM/BT radio, toolbox, front and rear fenders, 380/85R24 tires.

SN: MK-16400HC1002 (Bridgeville, DE) **BROKERED**

SPREADERS



\$2,500

2012 New Leader 5 ft. Multiplier Insert, , 5 ft multi-product insert, fits in New Leader spreader, 304 SS, 143 cu. ft capacity. Insert is in good condition.

SN: 125102 (PA) **U1534A**



\$5,500

2013 New Leader L3220G4, painted 409 SS New Leader L3220G4 12 ft. spreader body, 250 cu ft capacity, fenders, 34 in belt over chain, multiplier ready, Raven product control node. No hydraulic tank and cooler.

SN: 134137 (PA) **U1542**



\$8,500

New Leader L3220G4, Model L4258G4 spreader bed, 409SS, Raven controls, for Rogator Self Propelled Machines.

SN: 134463 (PA) **U1560**



\$6,000

2013 GVM 5 ft. Fusion Insert, 5 ft multi-product insert, fits in GVM Double Duty spreader, 304 SS, 143 cu. ft capacity. Insert is in good condition.

(Houston, MO) **BROKERED**



\$50,000

2015 GVM 8.0T Double Duty FR Pull Spreader, 409 SS GVM Double Duty 8.0-ton 10 ft. spreader body, fusion ready, Raven ISObus compatible with any VT terminal, 10 ft x 102 in. wide, 250 ft³ capacity, Cable-Lok roll tarp, 120 in. track frame assembly, (2) 380/95R46 Trelleborg tires (70% remains), includes Scale-Tec (4) load cell system with monitor.

SN: PS-1580TF1003 (PA) **U1561**



\$90,000

2012 GVM E275 Prowler, 3685 hours, Cummins QSB6.7 275 hp diesel engine, auto. ZF WG210 powershift trans. reman 07/2023, 120 in. axles, painted 409 SS New Leader L3220G4 9T spreader with insert, Viper Pro, parallel swathing, Raven Viper Pro, Novatel receiver, RGL 600 Light Bar, A/C, AM/FM radio, air ride seat, front fenders, 380/90R46 Goodyear row crop tires (40% remains), includes set of 680/55R42 floater tires.

SN: CS-12275IX1005 (OH) **U1559**



\$105,000

2015 GVM E325 Prowler, Cummins QSL 8.9L 325 hp diesel engine, 1010 ft-lb torque, auto. ZF WG 210 6-speed powershift trans, 114 in. axles, variable coil spring suspension, combo ready, painted 409 SS New Leader L4000 with a 5 ft. insert spreader body, bin level sensor, rear camera, Ag Leader InCommand 1200, Ag Leader SteerCommand, reverse pitch fan, A/C, AM/FM radio, air ride seat, Firestone 380/90R46 tires. Transmission remanned in 2021.

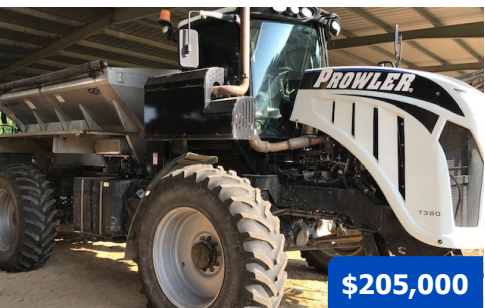
SN: CS-15325XI1030 (PA)



\$289,500

2019 GVM T380 Prowler, 1115 hrs., Cummins QSL9 380 hp turbo diesel engine, Funk DF250 4x4 powershift 11-speed auto. trans., 114 in. Dromos axles, 2WS, reverse pitch fan, Raven Viper 4+ field computer with RS-1 ISO steering receiver, painted 409SS GVM Double Duty Air 3-compartment spreader body, 70 ft 304SS booms, 26 in. spacings, rear camera, metering system for micro nutrient bin, A/C, AM/FM/BT radio, air ride seat, electric roll tarp, 650/70R46 Goodyear flotation tires (70% remains). Sub-frame blasted and painted, includes remainder of EPG Premier warranty.

SN: CS-193802WT1010 (MO) **U1532**



\$205,000

2019 GVM T380 Prowler, 1882 hrs., Cummins QSL9 380 hp turbo diesel engine, Funk DF250 4x4 powershift 11-speed auto. trans., 114 in. Dromos axles rated @ 32,000 lb., 4WS, reverse pitch fan, 304SS 9.0T New Leader NL5000G5 spreader body, Raven Viper 4 with RS-1 ISO steering receiver, A/C, AM/FM/BT radio, air ride seat, window tint, roll tarp, front fenders, 380/90R46 Trelleborg tires (90% remains). EPG warranty options available.

SN: CS-193804WT1029 (MO) **U1556**



\$279,000

2020 GVM T380 Prowler, 1841 hrs., Cummins QSL9 380 hp turbo diesel engine, Funk DF250 4x4 powershift 11-speed auto. trans., Dromos adjustable axles rated @ 34,000 lb., 4WS, sprayer combo joystick, reverse pitch fan, 304SS GVM 11.0T Double Duty TR4 spreader body with reverse rotating spinners, 4-section shutoff, bulkhead window, Raven Viper 4 with RS-1 ISO steering receiver, A/C, AM/FM/BT radio, air ride seat, window tint, electric roll tarp, front fenders, 480/80R50 Alliance tires. EPG warranty options available. SN: CS-20380XAA1044 (MO) **U1528**



\$275,000

2020 GVM T380 Prowler, 954 hrs., Cummins QSL9 380 hp turbo diesel engine, Funk DF250 4x4 powershift 11-speed auto. trans., Dromos axles rated @ 34,000 lb., 4WS, 304SS GVM 11.0T Double Duty SR1 spreader body with reverse rotating spinners, 1-section shutoff, bulkhead window, bin level sensor, 124 in. fenders, Raven Viper 4 with RS-1 ISO steering receiver, A/C, AM/FM/BT radio, air ride seat, roll tarp, front fenders, 380/90R46 row crop tires (80% remains). Includes remainder of 3-yr/3000 hrs. EPG Premier Warranty.

SN: CS-203804WT1047 (MO) **U1548**



\$295,000

2021 GVM T325 Prowler, 1120 hrs., Cummins B6.7L 325 hp turbo diesel engine, Funk DF250 4x4 powershift 11-speed auto. trans., Dromos axles rated @ 34,000 lb., 4WS, 304SS GVM 11.0T Double Duty SR1 spreader body with reverse rotating spinners, 1-section shutoff, bulkhead window, 124 in. fenders, Raven Viper 4+ with RS-1 ISO steering receiver, RGL 600 light bar, A/C, AM/FM/BT radio, air ride seat, window tint, roll tarp, 380/90R46 row crop tires (50% remains). Includes remainder of 3-yr/3000 hrs. EPG Premier Warranty.

SN: CS-213254WT1057 (PA) **U1539**



\$3,000

Crenlo Genesis Cab, Brand new cabs made for 1996-2014 GVM Prowlers. Will fit all Rowcats, 1149/9909T and 9275 Prowlers. Can also fit New Holland Genesis series tractors with modifications. (PA)



\$7,000

2019 Cummins QSL9 Diesel Engine, Used Cummins engine, 6 cylinder, 9L, 350 hp at 2100 rpm. (PA) **U1558**

PART NUMBER	DESCRIPTION	QTY	PRICE
W38-13300	Rim 38 x 12 11/16 in. offset (front)	2	\$566
W-619060R	Rim W14 x 16.1	2	\$73
42-01160 (PA)	Assy., Dash Panel Electronic 2004	3	\$1,327
117-0138-050	Auto Boom Kits	1	\$9459.21



CALL

2023 GVM T380 Prowler, Cummins QSL9 380 hp turbo diesel engine, Funk DF250 4x4 powershift 11-speed auto. trans., Meritor axles, 2WS, 304SS GVM 11.0T Double Duty SR1 spreader body with reverse rotating spinners, 1-section shutoff, bulkhead window, 124 in. fenders, Raven Viper 4 with RS-1 ISO steering receiver, A/C, AM/FM/BT radio, air ride seat, roll tarp, front fenders, 380/90R46 Trelleborg row crop tires. Includes 3-yr/3000 hrs. EPG Premier Warranty.

SN: CS-233802WT1084 (OH) **ON RENT**



\$24,000

2022 Newton Crouch NC5000, 5 ton, 163 cu. ft. capacity, designed for fertilizer spreading, 50 ft spread pattern, 304 SS hull, dishes, inverted vee, blades and conveyor, trailer painted blue powder coat, trailer frame reinforced of 2 x 6 inch tube, 7 in. conveyor chain, dual 19 in. dishes with 6 blades, universal joint on spinner drive shaft, ground driven conveyor, 6 bolt hubs, 7000 lb drop leg tongue jack, braided nylon rope pull, 540 PTO drive with twin spinners, 6 leaf and double eye springs, roll tarp fitted with stainless tarp bow, 11L x 15 – 8 ply tires.

SN: 11-22-13535 & 11-22-13533 (PA)



\$24,000

2022 Newton Crouch NC5000N, 5 ton, 163 cu. ft. capacity, designed for fertilizer spreading, narrow track with 61.5 in. wheel centers, 50 ft spread pattern, 304 SS hull, dishes, inverted vee, blades and conveyor, trailer painted blue powder coat, trailer frame reinforced of 2 x 6 inch tube, 7 in. conveyor chain, dual 19 in. dishes with 6 blades, universal joint on spinner drive shaft, ground driven conveyor, 6 bolt hubs, 7000 lb drop leg tongue jack, braided nylon rope pull, 540 PTO drive with twin spinners, 6 leaf and double eye springs, roll tarp fitted with stainless tarp bow, 11L x 15 – 8 ply tires.

SN: 11-22-13542 (PA)



\$29,600

2022 Newton Crouch NC6000, 6 ton, 204 cu. ft. capacity, designed for fertilizer spreading, 50 ft spread pattern, 304 SS hull, dishes, inverted vee, blades and conveyor, trailer painted blue powder coat, trailer frame reinforced of 2 x 6 inch tube, 7 in. conveyor chain, dual 19 in. dishes with 6 blades, universal joint on spinner drive shaft, ground driven conveyor, 8 bolt hubs, 7000 lb drop leg tongue jack, braided nylon rope pull, 540 PTO drive with twin spinners, 5 leaf slipper springs, roll tarp fitted with stainless tarp bow, 16.5L x 16.1 – 10 ply tires.

SN: 11-22-13544 (PA)



\$216,000

2022 GVM Mako 455, 290 hrs., Cummins Stage V 3.8L 130 hp diesel engine, Allison auto. 2100 RDS trans., 46 in. clearance, double telescoping drive shaft, 425 gal. poly tank, 42/80 ft Pommier booms, 5-section shutoff valve, rotary triple nozzles, 15 in. nozzle spacing, Patchworks, Greentronics, EVO spray safe cab, air ride seat, A/C and heat, AM/FM/BT radio, LED work lights, rotating beacon, 320/85R24 front 380/85R24 rear tires.

SN: MK-224551001 (PA)