



January 6, 2025

USED & STOCK EQUIPMENT

Biglerville, PA • 800-345-3546 | Bellevue, OH • 800-848-8460 | Sikeston, MO • 573-475-9496

SPRAYERS



\$55,000

2012 AGCO Rogator 1100, 5035 hours, AGCO Power T4 8.4L 370 hp diesel engine, 1100 gal. SS tank, 100 ft booms with SS boom lines, 10 in. nozzle spacing, 5-way nozzles body, 7-section shutoff valve, Raven Viper Pro, AutoSteer, AccuBoom, A/C, AM/FM radio, air ride seat, 380/90R46 tires (30% remains).

SN: AGCA1100PCNSL1037 (OH) **U1545**



\$70,000

2013 Case IH Patriot 3330, 4025 hrs., Fiat 6.7L 285 hp diesel engine, hydrostatic trans., 1000 gal. SS tank, 90 ft. booms with 20 in. nozzle spacing, single body nozzles, SS chemical eductor, Trimble FMX2000 controller, AutoSteer, Auto shut-offs, AIM Command nozzle control, A/C, AM/FM radio, air ride seat, fenders, 380/90R46 Firestone tires (70% remains).

SN: YDT036007 (PA) **U1623**



\$145,000

2016 Peterbilt Stahly PB348, 1320 hours, 11,429 miles, Peterbilt chassis, PX-9 350 hp diesel engine, automatic trans., 1450 gal. SS tank, 80 ft booms with SS boom lines, 20 in. nozzle spacing, 5-section shutoff valve, 5-body nozzles, Raven Viper 4 controller, foam marker, AM/FM, A/C, air ride seat, fenders, front 48x25.00-20 Michelin (80% remains) rear 66x43.00-25 Alliance tires (70% remains). Includes set of row crop tires (90% remains). Excellent Condition!

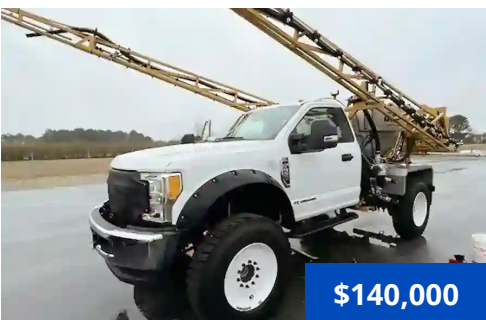
SN: 2NP3HJ8X0GM352451 (Belleville, PA) **Brokered**



\$65,000

2016 GVM International 7300, XX hrs, 17,618 miles, Cummins 6.7 250Hp engine, 4x4 ,6-speed automatic trans., meritor axles, 850-gallon Midstate SS tank, 60 ft booms with rubber hose and shock boom suspension, 20 in. on center nozzle spacing, 5-section shutoff valve, 5-way body nozzles, Raven Viper, Phoenix 200 GPS, Raven AccuBoom, Raven Autoboom, Raven Tilt Mod Kit, stainless steel cabinet, heat, A/C, AM/FM radio, high clearance package, rear fenders, 90 in. 385/85R34 MPT high clearance front tires (100% remains) and 600/60-30.5 rear floater tires (80% remains). Great condition!

SN: SR-16850TK1013 (PA) **U1621**



\$140,000

2017 GVM F550 Hydra Spray, 50 hrs, 900 miles, XL Super Duty, 4x4 6.7L Power Stroke factory diesel engine, 6-speed automatic trans., 545-gallon Midstate SS tank, 60 ft booms with rubber hose and shock boom suspension, 20 in. on center nozzle spacing, 5-section shutoff valve, triple body nozzles, Raven Viper 4, Phoenix 300, Raven AccuBoom, , undercoating, heat, A/C, AM/FM radio, SS fenders, 41 in. 177 11R22.5 12 ply tires (100% remains). Perfect condition, practically new!

SN: SR-17550G1074 (Salisbury, MD) **Brokered**

SPRAYERS



\$9,350

2011 GVM Spray Rig 1450, 1450 gal. SS tank, 90/70 ft booms with SS boom lines, 30 in. nozzle spacing, 5-section shutoff valve, triple body nozzles, 5 section shutoff valve, Raven Accuboom and Raven Autoboom, 3 sensors.

SN: SR-111450CB1018 (PA) **U1583A**



\$69,500

2012 GVM 9275 Prowler, 5921 hours, Cummins QSB6.7L 275 hp diesel engine, Funk 10-speed powershift trans., 114 in Axletech axles, 1600 gal. SS tank, 70/90 ft booms with SS boom lines, 15 in. nozzle spacing, 5-section shutoff valve, triple body nozzles, Raven Envivio Pro, Accuboom, A/C, AM/FM radio, air ride seat, 380/90R46 row crop tires (30% remains), 650/75R32 floater tires (75% remains).

SN: RC-119909T1079 (OH) **U1618**



\$65,000

2014 GVM 9275 Prowler, 6649 hrs., Cummins QSB6.7L 275 hp diesel engine, Funk 10-speed powershift trans., 1450 gal. SS tank, 70/90 ft booms with SS boom lines, 15 in. nozzle spacing, 5-section shutoff valve, triple body nozzles, Raven Viper 4+, parallel swathing, SmarTrax AutoSteer, AutoBoom, AccuBoom, Raven chemical injection, A/C, AM/FM radio, air ride seat, 380/90R46 Trelleborg tires (30% remains).

SN: RC-149909T1121 (OH) **U1584**

SPREADERS



\$39,900

2015 GVM 8.0T Double Duty FR Pull Spreader, 409 SS GVM Double Duty 8.0-ton 10 ft. spreader body, fusion ready, Raven IObus compatible with any VT terminal, 10 ft x 102 in. wide, 250 ft³ capacity, Cable-Lok roll tarp, 120 in. track frame assembly, (2) 380/95R46 Trelleborg tires (70% remains), includes Scale-Tec (4) load cell system with monitor.

SN: PS-1580TF1003 (OH) **U1561**



\$58,000

2009 GVM 9275 Prowler, 2494 hours, Cummins QSB6.7L 275 hp diesel engine, Funk DF250 10-speed powershift trans., 114 in Axletech axles, 304 SS New Leader L3220G4 9 ft spreader, Ag Leader Versa, A/C, AM/FM radio, air ride seat, rear fenders, 380/90R46 tires (30% remains). Includes a set of floater tires.

SN: RC-091149T1164 (PA) **U1617**



\$75,000

2012 GVM E275 Prowler, 3685 hours, Cummins QSB6.7 275 hp diesel engine, auto. ZF WG210 powershift trans. reman 07/2023, 120 in. axles, painted 409 SS New Leader L3220G4 9T spreader with insert, Raven Viper Pro, Novatel receiver, RGL 600 Light Bar, A/C, AM/FM radio, air ride seat, front fenders, 380/90R46 Goodyear row crop tires (40% remains), includes set of 680/55R42 floater tires..

SN: CS-12275IX1005 (OH) **U1559**



\$115,000

2015 GVM E325 Prowler, 3992 hrs., Cummins QSL 8.9L 325 hp diesel engine, 1010 ft-lb torque, auto. ZF WG 210 6-speed powershift trans, 99 in. axles, variable coil spring suspension, combo ready, GVM Double Duty 11.0T spreader body, bin level sensor, rear camera, Raven Viper Pro, reverse pitch fan, A/C, AM/FM radio, air ride seat, Firestone 380/90R46 tires. Set of 650/70R32 floater tires included.

SN: CS-15325NT1004 (PA) **U1572**



**PHOTO
COMING
SOON**

\$100,000

2015 GVM E325NT Prowler, 2845 hrs., Cummins QSL 8.9L 325 hp diesel engine, 1010 ft-lb torque, auto. ZF WG 210 6-speed powershift trans, 99 in. axles, 173 in. wheelbase, variable coil spring suspension, spreader only package, painted 409 SS GVM 11.0T Double Duty spreader body, rear camera, Raven Viper 4, Phoenix 300 GPS, SmarTrax 3D, reverse pitch fan, A/C, AM/FM radio, air ride seat, electric roll tarp, Firestone 380/90R46 tires (40% remains).

SN: CS-15325NT1003 (PA) **U1622**



\$99,500

2017 GVM E330AA Prowler, 5214 hrs., Cummins Tier 3 QSL 9L 330 hp turbo diesel engine, Funk DF250 11-speed powershift trans., 93-120 in wheel spacing, Dromos adjustable axles, 409 SS New Leader L4000G4 10-ton spreader, Raven Viper Pro, SmarTraxx, A/C, AM/FM radio, air ride seat, beacon lights, CleanFix fan, Firestone VF380/90R46 tires (40% remains).

SN: CS-17330AA1008 (PA) **U1580**



\$89,000

2017 GVM E330WT Prowler, 4796 Cummins Tier 3 QSL 9L 330 hp turbo diesel engine, Funk DF250 11-speed powershift trans., AxleTech axles - 114 in. wide track, combo ready, 304 SS New Leader L4000G4 10-ton spreader with 5 ft. multiplier insert, Ag Leader InCommand 1200 controller AutoSwath w/ 6500 GPS receiver, Ag Leader SteerCommand, A/C, AM/FM radio, air ride seat, dual beacon amber lights, reverse pitch programmable fan, electric roll tarp, fenders, 380/105R50 Goodyear tires (60% remains).

SN: CS-17330XI1023 (OH) **U1609**



**PHOTO
COMING
SOON**

\$205,000

2019 GVM T380 Prowler, 2680 hrs., Cummins QSL9 380 hp turbo diesel engine, Funk DF250 4x4 powershift 11-speed auto. trans., Dromos adjustable axles rated @ 34,000 lb., 2WS, sprayer combo joystick, reverse pitch fan, 304SS GVM 11.0T Double Duty spreader body, bulkhead window, Raven Viper 4 with RS-1 ISO steering receiver, A/C, AM/FM/BT radio, air ride seat, electric roll tarp, front and rear fenders, 380/105R50 Goodyear tires (60% remains). EPG warranty options available.

SN: CS-193802WT1028 (OH) **U1625**



\$199,000

2020 GVM T380 Prowler, 2017 hrs., Cummins QSL9 380 hp turbo diesel engine, Funk DF250 4x4 powershift 11-speed auto. trans., 120-164 in. wheel spacing, Dromos adjustable axles rated @ 34,000 lb., 4WS, sprayer combo joystick, reverse pitch fan, 304SS GVM 11.0T Double Duty TR4 spreader body with reverse rotating spinners, 4-section shutoff, bulkhead window, Raven Viper 4 with RS-1 ISO steering receiver, A/C, AM/FM/BT radio, air ride seat, window tint, electric roll tarp, front fenders, 380/105R54, 900/50R46 floaters. EPG warranty options available.

SN: CS-20380XAA1043 (PA) **U1587**



\$199,000

2020 GVM T380 Prowler, 1961 hrs., Cummins QSL9 380 hp turbo diesel engine, Funk DF250 4x4 powershift 11-speed auto. trans., Dromos adjustable axles rated @ 34,000 lb., 4WS, sprayer combo joystick, reverse pitch fan, 304SS GVM 11.0T Double Duty TR4 spreader body with reverse rotating spinners, 4-section shutoff, bulkhead window, Raven Viper 4 with RS-1 ISO steering receiver, A/C, AM/FM/BT radio, air ride seat, window tint, electric roll tarp, front fenders, 480/80R50 Alliance tires. EPG warranty options available.

SN: CS-20380XAA1044 (OH) **U1528**



\$165,000

2020 GVM T325 Prowler, 2843 hrs., Cummins B6.7L 325 hp diesel engine, Funk DF250 4x4 powershift 11-speed trans., 99 in. axles, 304SS GVM 11.0T Double Duty SR1 spreader body with reverse rotating spinners, 1-section shutoff, bulkhead window, bin level sensor, 124 in. fenders, Raven Viper 4 with RS-1 ISO steering receiver, A/C, AM/FM/BT radio, air ride seat, roll tarp, front fenders, 380/90R46 row crop tires (80% remains). Includes remainder of 3-yr/3000 hrs. EPG Premier Warranty.

SN: CS-203254NT1049 (PA) **U1611**



\$265,000

2021 GVM T380 Prowler, 1419 hrs., Cummins QSL9 380 hp turbo diesel engine, Funk DF250 4x4 powershift 11-speed auto. trans., Dromos wide track adjustable axles, 173 in. wheelbase, 4WS, reverse pitch fan, 304SS GVM 11.0T Double Duty SS1 spreader body with heavy bulk standard rotating spinners, bulkhead window, Raven Viper 4 with RS-1 ISO steering receiver, Slingshot unlock, Raven RGL 600 Light Bar, A/C, AM/FM/BT radio, air ride seat, window tint, electric roll tarp, rear camera and 2 extra, fenders, 480/95R50 Alliance row crop tires. EPG warranty options available.

SN: CS-21380XAA1060 (MO) **U1589**



\$170,000

2021 GVM T325 Prowler, 3600 hrs., Cummins B6.7L 325 hp turbo diesel engine, Funk DF250 4x4 powershift 11-speed auto. trans., adjustable axles, 4WS, 304SS GVM 11.0T Double Duty SS1 spreader body, 1-section shutoff, bulkhead window, 124 in. fenders, Raven Viper 4+ with RS-1 ISO steering receiver, RGL 600 light bar, A/C, AM/FM/BT radio, air ride seat, window tint, roll tarp, 380/90R46 row crop tires (35% remains). Includes set of 650/75R32 floater tires (60% remains) and EPG Warranty options available.

SN: CS-213254AA1062 (PA) **U1607**



\$285,000

2022 GVM X380 Prowler, 1007 hrs., Cummins QSL9 380 hp turbo diesel engine, Funk DF250 4x4 powershift 11-speed auto. trans., Dromos axles rated @ 32,000 lb., 4WS, 304SS GVM 11.0T Double Duty SR1 spreader body with reverse rotating spinners, 1-section shutoff, bulkhead window, 124 in. float fenders, Raven Viper 4 with RS-1 ISO steering receiver, A/C, AM/FM/BT radio, air ride seat, roll tarp, front fenders, window tint, 380/90R46 row crop tires (50% remains). Includes remainder of 3-yr/3000 hrs. EPG Premier Warranty.

SN: CS-223804WT1071 (PA) **U1591**



\$345,000

2022 GVM T325 Prowler, 667 hrs., Cummins B6.7L 325 hp turbo diesel engine, Dana HVT-R2 trans., adjustable axles, 4WS, 304SS GVM 11.0T Double Duty TS2 spreader body, 2-section shutoff, bulkhead window, 124 in. fenders, Raven Viper 4+ with RS-1 ISO steering receiver, RGL 600 light bar, A/C, AM/FM/BT radio, air ride seat, window tint, roll tarp, 380/90R46 row crop tires (60% remains). Includes remainder of 3-yr/3000 hrs. EPG Premier Warranty.

SN: CS-223254AA1078 (PA) **U1608**



\$235,000

2022 GVM T325 Prowler, 595 hrs., Cummins B6.7L 325 hp turbo diesel engine, Dana HVT-R2 trans., adjustable axles, 2WS, 304SS GVM 11.0T Double Duty SS1 spreader body with belt over chain, 1-section shutoff, bulkhead window, 124 in. fenders, Raven Viper 4+ with RS-1 ISO steering receiver, Slingshot Unlock, LED lights, rear camera, A/C, AM/FM/BT radio, air ride seat, window tint, heated electric mirrors, SS tool cabinet, SS pressure washer cabinet, electric roll tarp, 380/105R50 row crop tires (90% remains). Includes remainder of 3-yr/3000 hrs. EPG Premier Warranty.

SN: CS-223252AA1079 (Wilson, NC) **Brokered**



\$475,000

2022 GVM T380 Prowler, 500 hrs., Cummins QSL9 380 hp turbo diesel engine, Dana HVT-R2 trans., Meritor axles, 2WS, GVM Double Duty Air, 3-compartment 72 ft 304SS booms, painted 409 SS, 13'x78 in. wide, 350 cu ft, LH and RH 16 in. SS conveyor chains, SS hopper screens, 72 ft 304SS booms, 27 in. nozzle spacings, break away, 22 in. fan, electric roll tarp with Raven RCM ISO control, lights and reflector, hydraulic tilt and fold, electric-over-hydraulic controls, rear camera, dual 90cc pumps, 380/90R46 row crop tires (80% remains). Includes remainder of 5-yr/3000 hrs. EPG Premier Warranty.

SN: CS-223802WT1082 (PA) **U1582**



\$315,000

2023 GVM T380 Prowler, 635 hrs., Cummins QSL9 380 hp turbo diesel engine, Dana HVT-R2 trans., Dromos axles rated @ 32,000 lb., 4WS, 304SS GVM 11.0T Double Duty TR2 spreader body with reverse rotating spinners, 2-section shutoff, bulkhead window, 124 in. float fenders, Raven Viper 4 with RS-1 ISO steering receiver, A/C, AM/FM/BT radio, air ride seat, roll tarp, front fenders, window tint, AgCam camera, 380/90R46 row crop tires (75% remains). Includes remainder of 3-yr/3000 hrs. EPG Premier Warranty.

SN: CS-233804WT1088 (MO) **U1594**



\$315,000

2023 GVM T380 Prowler, 577 hrs., Cummins QSL9 380 hp turbo diesel engine, Dana HVT-R2 trans., Dromos axles rated @ 32,000 lb., 4WS, 304SS GVM 11.0T Double Duty TR2 spreader body with reverse rotating spinners, 2-section shutoff, bulkhead window, 124 in. float fenders, Raven Viper 4 with RS-1 ISO steering receiver, A/C, AM/FM/BT radio, air ride seat, roll tarp, front fenders, window tint, AgCam camera, 380/90R46 row crop tires (75% remains). Includes remainder of 3-yr/3000 hrs. EPG Premier Warranty.

SN: CS-233804WT1085 (PA) **U1593**



\$19,500

2011 Ag Chem Rogator 1396, 4905 hrs., Caterpillar 365 hp diesel engine, hydrostatic trans., painted 409SS AGCO Airmaxx spreader 200 ft³, 60 ft booms, A/C, AM/FM radio, 380/90R46 tires (30% remains).

SN: AGCA1396KNWMO1124 (MO) **U1578**



\$67,000

2014 RBR Vector 350, 3831 hrs., Cummins QSB 8.3L 350 hp diesel engine, Allison 4-speed auto. trans., AxleTech planetary axles, 4WD, 2017 Case Flex-Air 810 air body 2-bin spreader, 70 ft booms, Raven Viper Pro, AccuBoom, AutoSteer, light bar, A/C, air ride seat, tinted cab, electric roll tarp, front and rear fenders, 380/90R46 Michelin tires (70% remains). Hydraulic hoses replaced.

SN: FA1406123 (PA) **U1624**

SPREADERS



\$235,000

2022 RBR Vector 430, 901 hrs., Cummins 430 hp 9L diesel engine, Allison Automatic transmission, Marmon-Harrington 4x4 drop box, Raven Viper 4+, RS1 antenna, Raven Autosteer, 710/70R38 Floater tires (75% remains), 380/90R46 Row Crop Tires (50% remains). Chassis only.
SN: FA2206474 (PA) **U1616**

MISC.



\$3,500

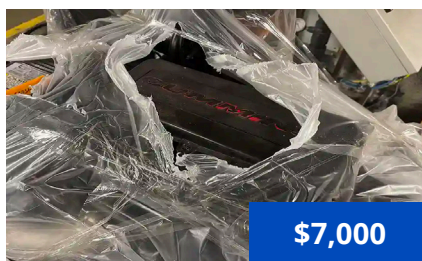
Set of 2 Firestone 800/65R32 floater tires on 10-bolt rims, will fit any GVM make and model Prowler. (PA) **U1588**



\$25,000

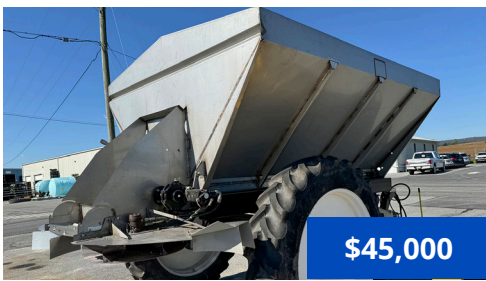
Set of 4 Goodyear 900/50R46 floater tires (50% remains). Three sets available. (PA) (OH) **U1593A, U1594A**

PART NO.	DESCRIPTION	QTY	PRICE
W38-13300	Rim 38 x 12 11/16 in. offset (front)	2	\$566
W-619060R	Rim W14 x 16.1	2	\$73
42-01160 (PA)	Assy., Dash Panel Electronic 2004	3	\$1,327
117-0138-050	Auto Boom Kits	1	\$9459.21



\$7,000

2019 Cummins QSL9 Diesel Engine, Used Cummins engine, 6 cylinder, 9L, 350 hp at 2100 rpm. (PA) **U1558**



\$45,000

2019 GVM 12.5T TranSpread Twin Chain, 304 SS, 12.5-ton capacity, Raven RCM ISO node, PWM automatic controller with drag and spinner control, gear drive with two hydraulic motor drives, 2-15 in. twin chains, PWM spinner speed control from the computer, 30 in. MS spinners, fold-up rear spinner deflectors, adjustable spread pattern lime 40-50 ft fertilizer 60-130 ft, airfoil splash guards, SS bumper guard, low profile, 380/90R46 tires on 46 in. rims. Perfect for lime, gypsum, manure, and fertilizer application.

SN: TR-19730TC1001 (PA)



\$90,000

2019 GVM Double Duty Air, 3-compartment 72 ft 304SS booms, painted 409 SS, 13'x78 in. wide, 350 cu ft, LH and RH 16 in. SS conveyor chains, SS hopper screens, 72 ft 304SS booms, 27 in. nozzle spacings, break away, 22 in. fan, electric roll tarp with Raven RCM ISO control, Recon SpreadSense, lights and reflector, hydraulic tilt and fold, electric-over-hydraulic controls, rear camera, dual 90cc pumps.

(PA)



\$27,500

2024 Newton Crouch NC5000, 5 ton, 163 cu. ft. capacity, designed for fertilizer spreading, 50 ft spread pattern, 304 SS hull, dishes, inverted vee, blades and conveyor, trailer painted blue powder coat, trailer frame reinforced of 2 x 6 inch tube, 7 in. conveyor chain, dual 19 in. dishes with 6 blades, universal joint on spinner drive shaft, ground driven hydraulic conveyor, 6 bolt hubs, 7000 lb drop leg tongue jack, braided nylon rope pull, 540 PTO drive with twin spinners, 6 leaf and double eye springs, roll tarp fitted with stainless tarp bow, 77 in. wheel center, 11L x 15 - 8 ply tires.

SN: NC00014027-4824 (PA)



\$27,500

2024 Newton Crouch NC5000N, 5 ton, 163 cu. ft. capacity, designed for fertilizer spreading, 50 ft spread pattern, 304 SS hull, dishes, inverted vee, blades and conveyor, trailer painted blue powder coat, trailer frame reinforced of 2 x 6 inch tube, 7 in. conveyor chain, dual 19 in. dishes with 6 blades, universal joint on spinner drive shaft, ground driven hydraulic conveyor, 8 bolt hubs, 7000 lb drop leg tongue jack, braided nylon rope pull, 540 PTO drive with twin spinners, 5 leaf slipper springs, roll tarp fitted with stainless tarp bow, 61.5 in. wheel center, 11L x 15 - 8 ply tires.

SN: NC00014028-4824, NC00014029-4824 & NC00014030-4824 (PA)



\$7,500

2023 Sno Way 29HD V-Plow, 8 ft. adjustable steel blade, down pressure series 2-29HD power pack, LED thermosensitive heated lights, wireless controller for plow and lights, upgraded hydraulics package, outboard mount stand, complete fleet 2-plug connection system, energy smart system, set of plow shoes, includes emergency parts repair kit.

(PA)



\$1,800

2023 Sno Way Tailgate Spreader, 6 cu. ft. tailgate mounted salt spreader, wired controller for easy on/off, auxiliary light kit, vibrator kit, flow control paddle, UV resistant poly hopper, powder-coated steel frame construction, Class III tapered receiver hitch mount, impact resistant nylon roller wheels.

(PA)



\$1,800

2023 Sno Way Tailgate Spreader, 9 cu. ft. tailgate mounted salt spreader, wired controller for easy on/off, auxiliary light kit, vibrator kit, flow control paddle, UV resistant poly hopper, powder-coated steel frame construction, Class III tapered receiver hitch mount, impact resistant nylon roller wheels.

(PA)