



November 25, 2024

# USED & STOCK EQUIPMENT

Biglerville, PA • 800-345-3546 | Bellevue, OH • 800-848-8460 | Sikeston, MO • 573-475-9496

SPRAYERS



\$55,000

**2012 AGCO Rogator 1100**, 5035 hours, AGCO Power T4 8.4L 370 hp diesel engine, 1100 gal. SS tank, 100 ft booms with SS boom lines, 10 in. nozzle spacing, 5-way nozzles body, 7-section shutoff valve, Raven Viper Pro, AutoSteer, AccuBoom, A/C, AM/FM radio, air ride seat, 380/90R46 tires (30% remains).

SN: AGCA1100PCNSL1037 (OH) **U1545**



\$70,000

**2013 Case IH Patriot 3330**, 4025 hrs., Fiat 6.7L 285 hp diesel engine, hydrostatic trans., 1000 gal. SS tank, 90 ft. booms with 20 in. nozzle spacing, single body nozzles, SS chemical eductor, Trimble FMX2000 controller, AutoSteer, Auto shut-offs, AIM Command nozzle control, A/C, AM/FM radio, air ride seat, fenders, 380/90R46 Firestone tires (70% remains).

SN: YDT036007 (Thompsontown, PA) **Brokered**



\$21,850

**2022 Crop Care AGX500T**, 500 gal. poly tank, 60 ft booms with rubber hose boom lines, 20 in nozzle spacing, 5-section shutoff valve, single nozzle body, row crop tires (90% remains)..

SN: 5826 (PA) **U1620**



\$145,000

**2016 Peterbilt Stahly PB348**, 1320 hours, 11,429 miles, Peterbilt chassis, PX-9 350 hp diesel engine, automatic trans., 1450 gal. SS tank, 80 ft booms with SS boom lines, 20 in. nozzle spacing, 5-section shutoff valve, 5-body nozzles, Raven Viper 4 controller, foam marker, AM/FM, A/C, air ride seat, fenders, front 48x25.00-20 Michelin (80% remains) rear 66x43.00-25 Alliance tires (70% remains). Includes set of row crop tires (90% remains). Excellent Condition!

SN: 2NP3HJ8X0GM352451 (Bellevue, PA) **Brokered**



\$42,500

**2004 International DT 7400**, 3038 hrs., MaxxForce 300 hp diesel engine, Eaton Fuller 10-speed trans., Miller 1200 gal. SS tank, 70 ft booms with SS boom lines, 30 in. nozzle spacing, 7-section shutoff valve, single body nozzles, Ag Leader 1200 controller, SS chemical eductor, foam marker, A/C, AM/FM radio, air ride seat, fenders, includes front 650/55/R26.5 Alliance (75% remains) and rear 105/50/R32 Trelleborg tires (90% remains). Product pump replaced in 2023, Great Condition!

SN: 1HTWDADR44J018677 (Thompsontown, PA) **Brokered**



\$140,000

**2017 GVM F550 Hydra Spray**, 50 hrs, 900 miles, XL Super Duty, 4x4 6.7L Power Stroke factory diesel engine, 6-speed automatic trans., 545-gallon Midstate SS tank, 60 ft booms with rubber hose and shock boom suspension, 20 in. on center nozzle spacing, 5-section shutoff valve, triple body nozzles, Raven Viper 4, Phoenix 300, Raven AccuBoom, , undercoating, heat, A/C, AM/FM radio, SS fenders, 41 in. 177 11R22.5 12 ply tires (100% remains). Perfect condition, practically new!

SN: SR-17550G1074 (Salisbury, MD) **Brokered**



\$9,350

**2011 GVM Spray Rig 1450**, 1450 gal. SS tank, 90/70 ft booms with SS boom lines, 30 in. nozzle spacing, 5-section shutoff valve, triple body nozzles, 5 section shutoff valve, Raven Accuboom and Raven Autoboom, 3 sensors.

SN: SR-111450CB1018 (PA) **U1583A**



\$69,500

**2012 GVM 9275 Prowler**, 5921 hours, Cummins QSB6.7L 275 hp diesel engine, Funk 10-speed powershift trans., 114 in Axletech axles, 1600 gal. SS tank, 70/90 ft booms with SS boom lines, 15 in. nozzle spacing, 5-section shutoff valve, triple body nozzles, Raven Envisio Pro, Accuboom, A/C, AM/FM radio, air ride seat, 380/90R46 row crop tires (30% remains), 650/75R32 floater tires (75% remains).

SN: RC-119909T1079 (OH) **U1618**



\$65,000

**2014 GVM 9275 Prowler**, 6649 hrs., Cummins QSB6.7L 275 hp diesel engine, Funk 10-speed powershift trans., 1450 gal. SS tank, 70/90 ft booms with SS boom lines, 15 in. nozzle spacing, 5-section shutoff valve, triple body nozzles, Raven Viper 4+, parallel swathing, SmarTrax AutoSteer, AutoBoom, AccuBoom, Raven chemical injection, A/C, AM/FM radio, air ride seat, 380/90R46 Trelleborg tires (30% remains).

SN: RC-149909T1121 (OH) **U1584**



\$72,900

**2015 GVM E370 Prowler**, 5150 hrs., Cummins QSL8.9 370 hp diesel engine, Funk DF250 auto. trans., 114 in. axles, 1800-gallon SS tank, 200-gallon freshwater tank, 100 ft booms with SS boom lines, 15 in. nozzle spacing, 3-way body nozzles, 9-section shut-off, parallel swathing, foam marker, Raven Viper 4, combo ready, A/C, AM/FM radio, air ride seat, fenders, Trelleborg 380/90R46 tires (50% remains). Transmission rebuilt Feb. 2024, well-maintained machine.

SN: CS-15114XI1040 (Belmont, ON CAN) **Brokered**



\$195,000

**2020 GVM T325 Prowler**, 2843 hrs., Cummins B6.7L 325 hp diesel engine, Funk DF250 4x4 powershift 11-speed trans., 99 in. axles, sprayer combo joystick, 1600 gal. SS tank, 100 ft booms with SS boom lines, 20 in. nozzle spacing, 15-section shutoff valve, five-way body nozzles, Raven Viper 4+, Raven RS-1 AutoSteer, 15 section AccuBoom, chemical eductor, 5 sensor Greentronics, Boom Height Control, A/C, AM/FM radio, air ride seat, 380/90R46 Michelin Spray-Bib tires (50% remains).

SN: CS-203254NT1049 (PA) **U1611**



SPRAYERS

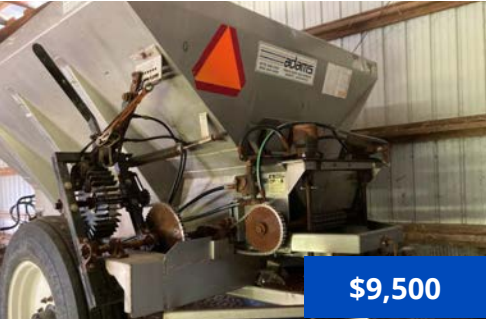


**\$210,000**

**2018 RBR 350 Vortex**, 2009 hours, Cummins 8.3L 305 hp diesel engine, Allison auto. trans., Meritor axles, 1600 gal. SS tank, 100 ft booms with SS boom lines, 15 in. nozzle spacing, 9-section shutoff valve, five-way body nozzles, Raven Viper 4, AutoSteer, Accu-Boom, A/C, AM/FM radio, air ride seat, front and rear fenders, 380/90R46 row crop tires (40% remains).

(Deep Run, NC) **Brokered**

SPREADERS



**\$9,500**

**Adams HLS-6-2W**, 304 SS pull behind fertilizer spreader, lime and fertilizer, single axle, high ground clearance, hydraulic spinners, row crop spread axle on 30 in. center, twin spinner, ground drive, hydraulic press wheel engagement, nice stainless box, brand new tires.

SN: 00486 (PA) **U1619**



**\$39,900**

**2015 GVM 8.0T Double Duty FR Pull Spreader**, 409 SS GVM Double Duty 8.0-ton 10 ft. spreader body, fusion ready, Raven ISObus compatible with any VT terminal, 10 ft x 102 in. wide, 250 ft<sup>3</sup> capacity, Cable-Lok roll tarp, 120 in. track frame assembly, (2) 380/95R46 Trelleborg tires (70% remains), includes Scale-Tec (4) load cell system with monitor.

SN: PS-1580TF1003 (OH) **U1561**



**\$58,000**

**2009 GVM 9275 Prowler**, 2494 hours, Cummins QSB6.7L 275 hp diesel engine, Funk DF250 10-speed powershift trans., 114 in Axletech axles, 304 SS New Leader L3220G4 9 ft spreader, Ag Leader Versa, A/C, AM/FM radio, air ride seat, rear fenders, 380/90R46 tires (30% remains). Includes a set of floater tires.

SN: RC-091149T1164 (PA) **U1617**



**\$75,000**

**2012 GVM E275 Prowler**, 3685 hours, Cummins QSB6.7 275 hp diesel engine, auto. ZF WG210 powershift trans. reman 07/2023, 120 in. axles, painted 409 SS New Leader L3220G4 9T spreader with insert, Raven Viper Pro, Novatel receiver, RGL 600 Light Bar, A/C, AM/FM radio, air ride seat, front fenders, 380/90R46 Goodyear row crop tires (40% remains), includes set of 680/55R42 floater tires..

SN: CS-12275IX1005 (OH) **U1559**



**\$115,000**

**2015 GVM E325 Prowler**, 3992 hrs., Cummins QSL 8.9L 325 hp diesel engine, 1010 ft-lb torque, auto. ZF WG 210 6-speed powershift trans, 99 in. axles, variable coil spring suspension, combo ready, GVM Double Duty 11.0T spreader body, bin level sensor, rear camera, Raven Viper Pro, reverse pitch fan, A/C, AM/FM radio, air ride seat, Firestone 380/90R46 tires. Set of 650/70R32 floater tires included.

SN: CS-15325NT1004 (PA) **U1572**



**\$89,500**

**2015 GVM E325 Prowler**, 3199 hrs., Cummins QSL 8.9L 325 hp diesel engine, 1010 ft-lb torque, auto. ZF WG 210 6-speed powershift trans, 114 in. axles, variable coil spring suspension, combo ready, painted 409 SS GVM 11.0T Double Duty spreader body, rear camera, Raven Viper Pro, SmarTrax, AutoSteer, reverse pitch fan, A/C, AM/FM radio, air ride seat, Trelleborg 380/90R46 tires.

SN: CS-15325XI1034 (PA) **U1577**



**\$115,000**

**2016 GVM E330 Prowler**, 2589 hours, Cummins QSL 8.9L 330 hp diesel engine, Funk DF250 powershift 11-speed trans., AxleTech axles, 114 in. wide track, 409SS GVM Double Duty FR 11-ton spreader with a 5' insert, Raven Viper 4+, SmarTrax, AutoSteer, A/C, AM/FM, air ride seat, fenders, Trelleborg 380/90R46 tires (30% remains). Includes set of 800/65R32 floater tires (50% remains).

SN: CS-16330XI1002 (OH) **U1610**



**\$105,000**

**2017 GVM E330AA Prowler**, 5214 hrs., Cummins Tier 3 QSL 9L 330 hp turbo diesel engine, Funk DF250 11-speed powershift trans., 93-120 in wheel spacing, Dromos adjustable axles, 409 SS New Leader L4000G4 10-ton spreader, Raven Viper Pro, SmarTrax, A/C, AM/FM radio, air ride seat, beacon lights, CleanFix fan, Firestone VF380/90R46 tires (40% remains).

SN: CS-17330AA1008 (PA) **U1580**



**\$95,500**

**2017 GVM E330WT Prowler**, 4796 Cummins Tier 3 QSL 9L 330 hp turbo diesel engine, Funk DF250 11-speed powershift trans., AxleTech axles - 114 in. wide track, combo ready, 304 SS New Leader L4000G4 10-ton spreader with 5 ft. multiplier insert, Ag Leader InCommand 1200 controller AutoSwath w/ 6500 GPS receiver, Ag Leader SteerCommand, A/C, AM/FM radio, air ride seat, dual beacon amber lights, reverse pitch programmable fan, electric roll tarp, fenders, 380/105R50 Goodyear tires (60% remains).

SN: CS-17330XI1023 (OH) **U1609**



**\$199,000**

**2020 GVM T380 Prowler**, 2017 hrs., Cummins QSL9 380 hp turbo diesel engine, Funk DF250 4x4 powershift 11-speed auto. trans., 120-164 in. wheel spacing, Dromos adjustable axles rated @ 34,000 lb., 4WS, sprayer combo joystick, reverse pitch fan, 304SS GVM 11.0T Double Duty TR4 spreader body with reverse rotating spinners, 4-section shutoff, bulkhead window, Raven Viper 4 with RS-1 ISO steering receiver, A/C, AM/FM/BT radio, air ride seat, window tint, electric roll tarp, front fenders, 380/105R54, 900/50R46 floaters. EPG warranty options available.

SN: CS-20380XAA1043 (OH) **U1587**



**\$199,000**

**2020 GVM T380 Prowler**, 1961 hrs., Cummins QSL9 380 hp turbo diesel engine, Funk DF250 4x4 powershift 11-speed auto. trans., Dromos adjustable axles rated @ 34,000 lb., 4WS, sprayer combo joystick, reverse pitch fan, 304SS GVM 11.0T Double Duty TR4 spreader body with reverse rotating spinners, 4-section shutoff, bulkhead window, Raven Viper 4 with RS-1 ISO steering receiver, A/C, AM/FM/BT radio, air ride seat, window tint, electric roll tarp, front fenders, 480/80R50 Alliance tires. EPG warranty options available.

SN: CS-20380XAA1044 (MO) **U1528**





**\$195,000**

**2020 GVM T380 Prowler**, 1305 hrs., Cummins QSL9 380 hp turbo diesel engine, Funk DF250 4x4 powershift 11-speed auto. trans., Dromos axles rated @ 34,000 lb., 4WS, 304SS GVM 11.0T Double Duty SR1 spreader body with reverse rotating spinners, 1-section shutoff, bulkhead window, bin level sensor, 124 in. fenders, Raven Viper 4 with RS-1 ISO steering receiver, A/C, AM/FM/BT radio, air ride seat, roll tarp, front fenders, 380/90R46 row crop tires (80% remains). Includes remainder of 3-yr/3000 hrs. EPG Premier Warranty.

SN: CS-203804WT1047 (OH) **U1548**



**\$265,000**

**2021 GVM T380 Prowler**, 1419 hrs., Cummins QSL9 380 hp turbo diesel engine, Funk DF250 4x4 powershift 11-speed auto. trans., Dromos wide track adjustable axles, 173 in. wheelbase, 4WS, reverse pitch fan, 304SS GVM 11.0T Double Duty SS1 spreader body with heavy bulk standard rotating spinners, bulkhead window, Raven Viper 4 with RS-1 ISO steering receiver, Slingshot unlock, Raven RGL 600 Light Bar, A/C, AM/FM/BT radio, air ride seat, window tint, electric roll tarp, rear camera and 2 extra, fenders, 480/95R50 Alliance row crop tires. EPG warranty options available.

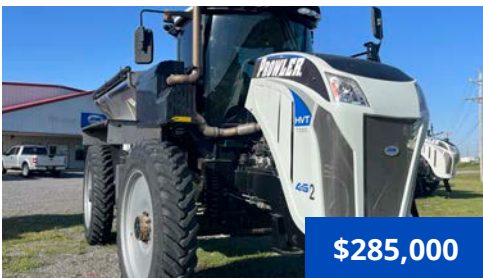
SN: CS-21380XAA1060 (MO) **U1589**



**\$170,000**

**2021 GVM T325 Prowler**, 3600 hrs., Cummins B6.7L 325 hp turbo diesel engine, Funk DF250 4x4 powershift 11-speed auto. trans., adjustable axles, 4WS, 304SS GVM 11.0T Double Duty SS1 spreader body, 1-section shutoff, bulkhead window, 124 in. fenders, Raven Viper 4+ with RS-1 ISO steering receiver, RGL 600 light bar, A/C, AM/FM/BT radio, air ride seat, window tint, roll tarp, 380/90R46 row crop tires (35% remains). Includes set of 650/75R32 floater tires (60% remains) and EPG Warranty options available.

SN: CS-213254AA1062 (PA) **U1607**



**\$285,000**

**2022 GVM X380 Prowler**, 1007 hrs., Cummins QSL9 380 hp turbo diesel engine, Funk DF250 4x4 powershift 11-speed auto. trans., Dromos axles rated @ 32,000 lb., 4WS, 304SS GVM 11.0T Double Duty SR1 spreader body with reverse rotating spinners, 1-section shutoff, bulkhead window, 124 in. float fenders, Raven Viper 4 with RS-1 ISO steering receiver, A/C, AM/FM/BT radio, air ride seat, roll tarp, front fenders, window tint, 380/90R46 row crop tires (50% remains). Includes remainder of 3-yr/3000 hrs. EPG Premier Warranty.

SN: CS-223804WT1071 (MO) **U1591**



**\$345,000**

**2022 GVM T325 Prowler**, 667 hrs., Cummins B6.7L 325 hp turbo diesel engine, Dana HVT-R2 trans., adjustable axles, 4WS, 304SS GVM 11.0T Double Duty TS2 spreader body, 2-section shutoff, bulkhead window, 124 in. fenders, Raven Viper 4+ with RS-1 ISO steering receiver, RGL 600 light bar, A/C, AM/FM/BT radio, air ride seat, window tint, roll tarp, 380/90R46 row crop tires (60% remains). Includes remainder of 3-yr/3000 hrs. EPG Premier Warranty.

SN: CS-223254AA1078 (PA) **U1608**



**\$235,000**

**2022 GVM T325 Prowler**, 595 hrs., Cummins B6.7L 325 hp turbo diesel engine, Dana HVT-R2 trans., adjustable axles, 2WS, 304SS GVM 11.0T Double Duty SS1 spreader body with belt over chain, 1-section shutoff, bulkhead window, 124 in. fenders, Raven Viper 4+ with RS-1 ISO steering receiver, Slingshot Unlock, LED lights, rear camera, A/C, AM/FM/BT radio, air ride seat, window tint, heated electric mirrors, SS tool cabinet, SS pressure washer cabinet, electric roll tarp, 380/105R50 row crop tires (90% remains). Includes remainder of 3-yr/3000 hrs. EPG Premier Warranty.

SN: CS-223252AA1079 (Wilson, NC) **Brokered**



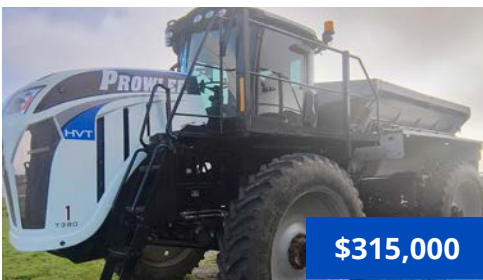
**PHOTO  
COMING  
SOON**

**\$475,000**

**2022 GVM T380 Prowler**, 500 hrs., Cummins QSL9 380 hp turbo diesel engine, Dana HVT-R2 trans., Meritor axles, 2WS, GVM Double Duty Air, 3-compartment 72 ft 304SS booms, painted 409 SS, 13'x78 in. wide, 350 cu ft, LH and RH 16 in. SS conveyor chains, SS hopper screens, 72 ft 304SS booms, 27 in. nozzle spacings, break away, 22 in. fan, electric roll tarp with Raven RCM ISO control, lights and reflector, hydraulic tilt and fold, electric-over-hydraulic controls, rear camera, dual 90cc pumps, 380/90R46 row crop tires (80% remains). Includes remainder of 5-yr/3000 hrs. EPG Premier Warranty.

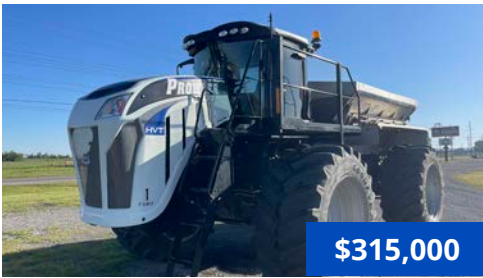
SN: CS-223802WT1082 (PA) **U1582**





\$315,000

**2023 GVM T380 Prowler**, 635 hrs., Cummins QSL9 380 hp turbo diesel engine, Dana HVT-R2 trans., Dromos axles rated @ 32,000 lb., 4WS, 304SS GVM 11.0T Double Duty TR2 spreader body with reverse rotating spinners, 2-section shutoff, bulkhead window, 124 in. float fenders, Raven Viper 4 with RS-1 ISO steering receiver, A/C, AM/FM/BT radio, air ride seat, roll tarp, front fenders, window tint, AgCam camera, 380/90R46 row crop tires (75% remains). Includes remainder of 3-yr/3000 hrs. EPG Premier Warranty. SN: CS-233804WT1088 (MO) **U1594**



\$315,000

**2023 GVM T380 Prowler**, 577 hrs., Cummins QSL9 380 hp turbo diesel engine, Dana HVT-R2 trans., Dromos axles rated @ 32,000 lb., 4WS, 304SS GVM 11.0T Double Duty TR2 spreader body with reverse rotating spinners, 2-section shutoff, bulkhead window, 124 in. float fenders, Raven Viper 4 with RS-1 ISO steering receiver, A/C, AM/FM/BT radio, air ride seat, roll tarp, front fenders, window tint, AgCam camera, 380/90R46 row crop tires (75% remains). Includes remainder of 3-yr/3000 hrs. EPG Premier Warranty. SN: CS-233804WT1085 (MO) **U1593**



\$19,500

**2011 Ag Chem Rogator 1396**, 4905 hrs., Caterpillar 365 hp diesel engine, hydrostatic trans., painted 409SS AGCO Airmaxx spreader 200 ft3, 60 ft booms, A/C, AM/FM radio, 380/90R46 tires (30% remains). SN: AGCA1396KNWMO1124 (MO) **U1578**



\$59,900

**2014 RBR Vector 350**, 3831 hrs., Cummins QSB 8.3L 350 hp diesel engine, Allison 4-speed auto. trans., AxleTech planetary axles, 4WD, 2017 Case Flex-Air 810 air body 2-bin spreader, 70 ft booms, Raven Viper Pro, AccuBoom, AutoSteer, light bar, A/C, air ride seat, tinted cab, electric roll tarp, front and rear fenders, 380/90R46 Michelin tires (70% remains). Hydraulic hoses replaced. SN: FA1406123 (Thompstontown, PA) **Brokered**



\$235,000

**2022 RBR Vector 430**, 901 hrs., Cummins 430 hp 9L diesel engine, Allison Automatic transmission, Marmon-Harrington 4x4 drop box, Raven Viper 4+, RS1 antenna, Raven Autosteer, 710/70R38 Floater tires (75% remains), 380/90R46 Row Crop Tires (50% remains). Chassis only. SN: FA2206474 (PA) **U1616**



\$3,500

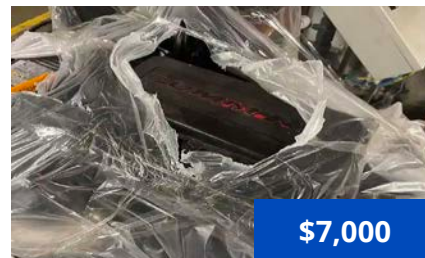
**Set of 2 Firestone 800/65R32** floater tires on 10-bolt rims, will fit any GVM make and model Prowler. (PA) **U1588**

PART NO.	DESCRIPTION	QTY	PRICE
W38-13300	Rim 38 x 12 11/16 in. offset (front)	2	\$566
W-619060R	Rim W14 x 16.1	2	\$73
42-01160 (PA)	Assy., Dash Panel Electronic 2004	3	\$1,327
117-0138-050	Auto Boom Kits	1	\$9459.21



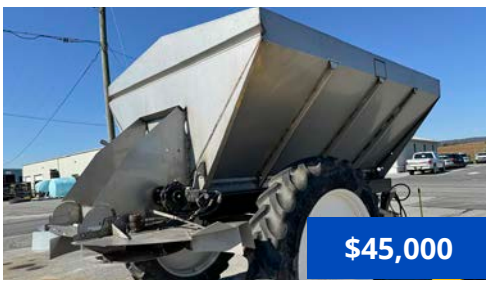
\$25,000

**Set of 4 Goodyear 900/50R46** floater tires (50% remains). Three sets available. (MO) (OH) **U1593A, U1594A**



\$7,000

**2019 Cummins QSL9 Diesel Engine**, Used Cummins engine, 6 cylinder, 9L, 350 hp at 2100 rpm. (PA) **U1558**



\$45,000

**2019 GVM 12.5T TranSpread Twin Chain**, 304 SS, 12.5-ton capacity, Raven RCM ISO node, PWM automatic controller with drag and spinner control, gear drive with two hydraulic motor drives, 2-15 in. twin chains, PWM spinner speed control from the computer, 30 in. MS spinners, fold-up rear spinner deflectors, adjustable spread pattern lime 40-50 ft fertilizer 60-130 ft, airfoil splash guards, SS bumper guard, low profile, 380/90R46 tires on 46 in. rims. Perfect for lime, gypsum, manure, and fertilizer application.

SN: TR-19730TC1001 (PA)



\$90,000

**2019 GVM Double Duty Air**, 3-compartment 72 ft 304SS booms, painted 409 SS, 13'x78 in. wide, 350 cu ft, LH and RH 16 in. SS conveyor chains, SS hopper screens, 72 ft 304SS booms, 27 in. nozzle spacings, break away, 22 in. fan, electric roll tarp with Raven RCM ISO control, Recon SpreadSense, lights and reflector, hydraulic tilt and fold, electric-over-hydraulic controls, rear camera, dual 90cc pumps.

(PA)



\$27,500

**2024 Newton Crouch NC5000**, 5 ton, 163 cu. ft. capacity, designed for fertilizer spreading, 50 ft spread pattern, 304 SS hull, dishes, inverted vee, blades and convey-or, trailer painted blue powder coat, trailer frame reinforced of 2 x 6 inch tube, 7 in. conveyor chain, dual 19 in. dishes with 6 blades, universal joint on spinner drive shaft, ground driven hydraulic conveyor, 6 bolt hubs, 7000 lb drop leg tongue jack, braided nylon rope pull, 540 PTO drive with twin spinners, 6 leaf and double eye springs, roll tarp fitted with stainless tarp bow, 77 in. wheel center, 11L x 15 - 8 ply tires.

SN: NC00014027-4824 (PA)



\$27,500

**2024 Newton Crouch NC5000N**, 5 ton, 163 cu. ft. capacity, designed for fertilizer spreading, 50 ft spread pattern, 304 SS hull, dishes, inverted vee, blades and convey-or, trailer painted blue powder coat, trailer frame reinforced of 2 x 6 inch tube, 7 in. conveyor chain, dual 19 in. dishes with 6 blades, universal joint on spinner drive shaft, ground driven hydraulic conveyor, 8 bolt hubs, 7000 lb drop leg tongue jack, braided nylon rope pull, 540 PTO drive with twin spinners, 5 leaf slipper springs, roll tarp fitted with stainless tarp bow, 61.5 in. wheel center, 11L x 15 - 8 ply tires.

SN: NC00014028-4824, NC00014029-4824 &amp; NC00014030-4824 (PA)



\$7,500

**2023 Sno Way 29HD V-Plow**, 8 ft. adjustable steel blade, down pressure series 2-29HD power pack, LED thermosensitive heated lights, wireless controller for plow and lights, upgraded hydraulics package, outboard mount stand, complete fleet 2-plug connection system, energy smart system, set of plow shoes, includes emergency parts repair kit.

(PA)



\$1,800

**2023 Sno Way Tailgate Spreader**, 6 cu. ft. tailgate mounted salt spreader, wired controller for easy on/off, auxiliary light kit, vibrator kit, flow control paddle, UV resistant poly hopper, powder-coated steel frame construction, Class III tapered receiver hitch mount, impact resistant nylon roller wheels.

(PA)



\$1,800

**2023 Sno Way Tailgate Spreader**, 9 cu. ft. tailgate mounted salt spreader, wired controller for easy on/off, auxiliary light kit, vibrator kit, flow control paddle, UV resistant poly hopper, powder-coated steel frame construction, Class III tapered receiver hitch mount, impact resistant nylon roller wheels.

(PA)